

INSTRUCTION: Classic



Real stone

Adhesive

Fiberglass

Background



MATERIAL

Stones on Walls sheet

PREPARATION

Before starting to work, check the Stones on Walls stone veneer you have received for possible errors, defects or damage. All stone sheets must be flat before processing.

In order to achieve an nice wall / floor image, all sheets to be processed should be spread out before starting work to determine which sheets you want to process and where.



MATERIAL

Special Impregnation or Special Protection or 2K-protection wall or 2K-protection floor

foam roller

lint-free cloth

PROTECTION

The impregnation / sealing process can take place both before and after processing. To do this, apply the impregnation or sealer with a foam roller thinly and evenly in a criss-cross pattern on your Stones on Walls sheet.

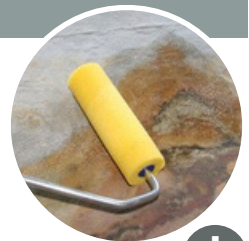
When applying the protective product, make sure that you do not apply excessive pressure, as this can create bubbles that do not dissolve and dry into white spots. 30 minutes after applying the impregnator, remove the excess

with a dry, lint-free cloth.

Tips:

→ By applying the 2K-protection wall several times the protection factor can be increased.

→ Sealing in wet areas is best after cutting and before applying glue to avoid open spots.



Please check the ~~the~~ opening effect of product on a sample advance when impregnating and sealing!

For detailed information on processing and the special features of the individual accessory products, please refer to the respective data sheets.

MATERIAL

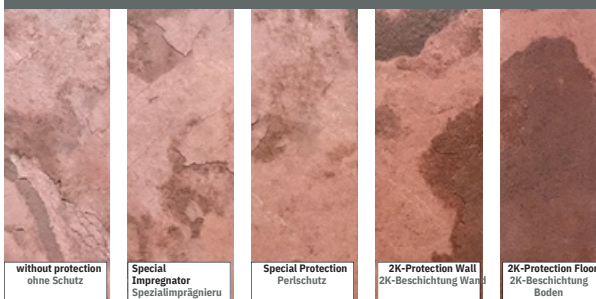
Impregnator or sealer

ADDITIONAL INFO: COLOR INTENSIFICATION

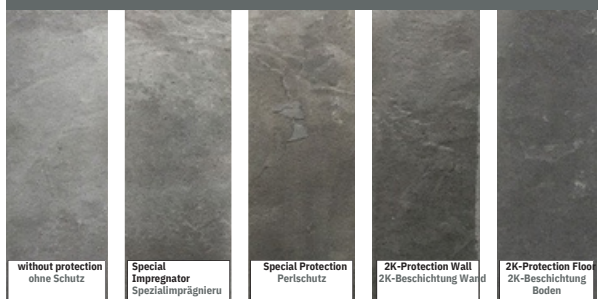
Impregnator and sealer change the color and feel of the stone. The following pictures give you an example of the darkening. Always carry out a test on leftover pieces of your chosen Stones on Wall decor before processing in order to convince yourself of the result of the sealing.



TERRA ROSSO



NERO



INSTRUCTION: Classic



MATERIAL

Floor & Wall or
Extreme: Bath &
Exterior

B3 notched trowel

Optional:
rubber gloves
spirit level

ADHESIVE

Apply the adhesive to the back of the Stones on Walls sheet or the surface to be processed. It is best to spread the adhesive with a B3 notched trowel evenly and make sure that the corresponding grooves are visible (i.e., do not pull the adhesive smooth!).

Then attach the sheet to the area provided and fix the material by hand.

The adhesive is fully cured after 48 hours.

Tips:

→ In order to achieve the best possible result, work with a spirit level and lay the material from bottom to top.

→ We recommend wearing rubber gloves.

→ Remnants of adhesive on the sheet can be removed with the *Special Cleaner*.



! For application areas from 90°C to 250°C (chimney / oven) please use a different adhesive, e.g. *Parasilico HTR N*.

MATERIAL

Grout
or
Natural Stone
Silicone

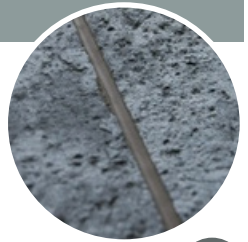
joint cross

masking tape

PROCESSING WITH JOINTS

Stones on Walls can be installed with or without a joint. Perfect joints are achieved with the help of grout. To do this, glue the Stones on Walls sheets with the desired joint width, using a joint cross if necessary.

Mask the edges of the sheet with masking tape. Do not leave masking tape on the material for too long. our the intended joint compound into the joint according to the manufacturer's instructions and smoothin it out.



We recommend
PCI Nanofug Premium

MATERIAL

Masking tape

Special Cleaner

Repairing Kit

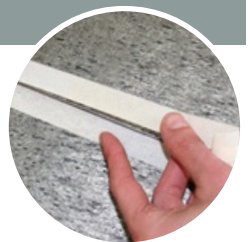
SEAMLESS PROCESSING

In the case of jointless gluing, it can happen that glue emerges from the joint. To protect the *Stones on Walls* sheet, mask and protect the edges on the front with masking tape before applying the adhesive.

If larger amounts of glue leak out, they can be carefully cleaned with the

Special Cleaner.

If you can still see glue on the edge of the joint, carefully apply the matching pigments from the *Repairing Kit* with a brush or by blowing. After the glue has hardened, blow off the excess pigments.



MATERIAL

Cordless screwdriver
with drill
or
Table / circular saw
or
Multi-tool
or
Jigsaw

CUTTING AND DRILLING

Our *Stones on Walls* thin slate decors can be processed with all common wood and stone processing tools.

A guide rail can be helpful here.



MATERIAL

Packing tape

Sandpaper

Optional:

Profile strips

CORNERS

To create corners, the Stones on Walls sheets are cut into the appropriate shape beforehand. Then fix the two fitting pieces from the front with packing tape. The adhesive is applied from the back, and additional adhesive should be applied to the connection with the cartridge. After attaching the sheets to the desired position, let the glue harden. Then remove the packing tape and carefully sand the corner with sandpaper.

Depending on your requirements, a corner can also be laid end to end and sanded or finished with profile strips suitable for Stones on Walls.

Mitre joints on abutting edges are also possible without any problems. To do this, simply cut the angles resulting from the degree of the corner.



MATERIAL

Ottoseal S70
in the color
transparent, white,
black or gray

SILICONE SEALS

If you want to use silicone for sealing or as a finishing edge, we recommend the natural stone silicone from *Ottoseal S70*.

Ottoseal Natural Stone Silicone is ideally suited for sealing and grouting with *Stones on Walls*.

Test series in our internal test laboratory confirm the good durability and adhesion to our stone veneers; We advise against using other silicone products from other manufacturers when using *Stones on Walls*, as other silicones may not adhere correctly.

Tips:

→ Test the product on a test piece or a inconspicuous place.

→ Ideally, have silicone work carried out by a specialist.



MATERIAL

Special Cleaner

GLUE RESIDUE

If there is glue residue on the *Stones on Walls* sheets, you can carefully remove them with the *Special Cleaner*.

Almost all types of adhesives can be removed this way.

